

CASE STUDY

Client – Bron Afon Housing Association

Project type – 1960's whole house deep retrofit

Heat loss – 60wm2

Size – 83m2

Total heat load - 5.3 kwh

Cost - £5,900

Product used - FLEECE. 110w placed in ceilings

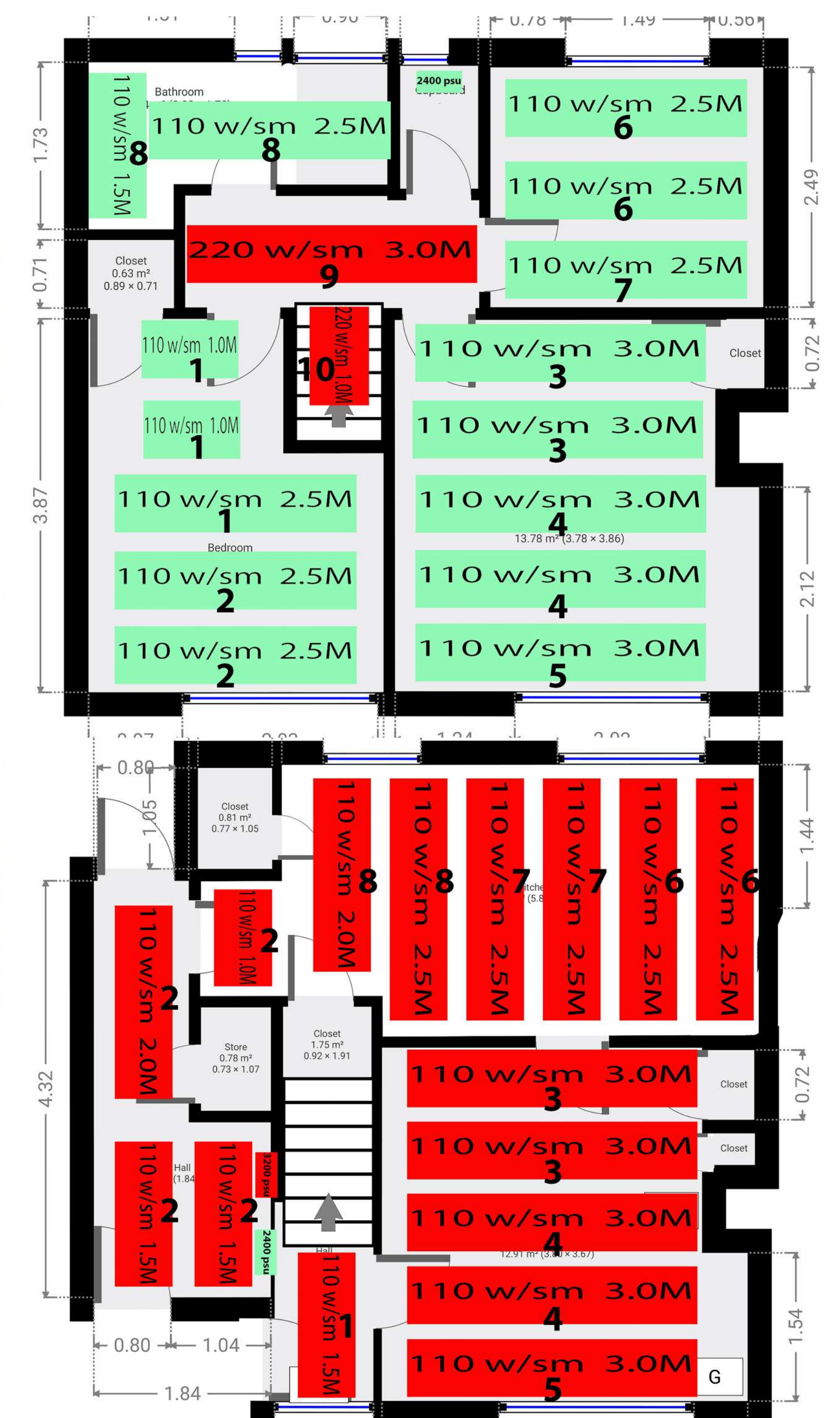
Control system – Energy Carbon

Brief:

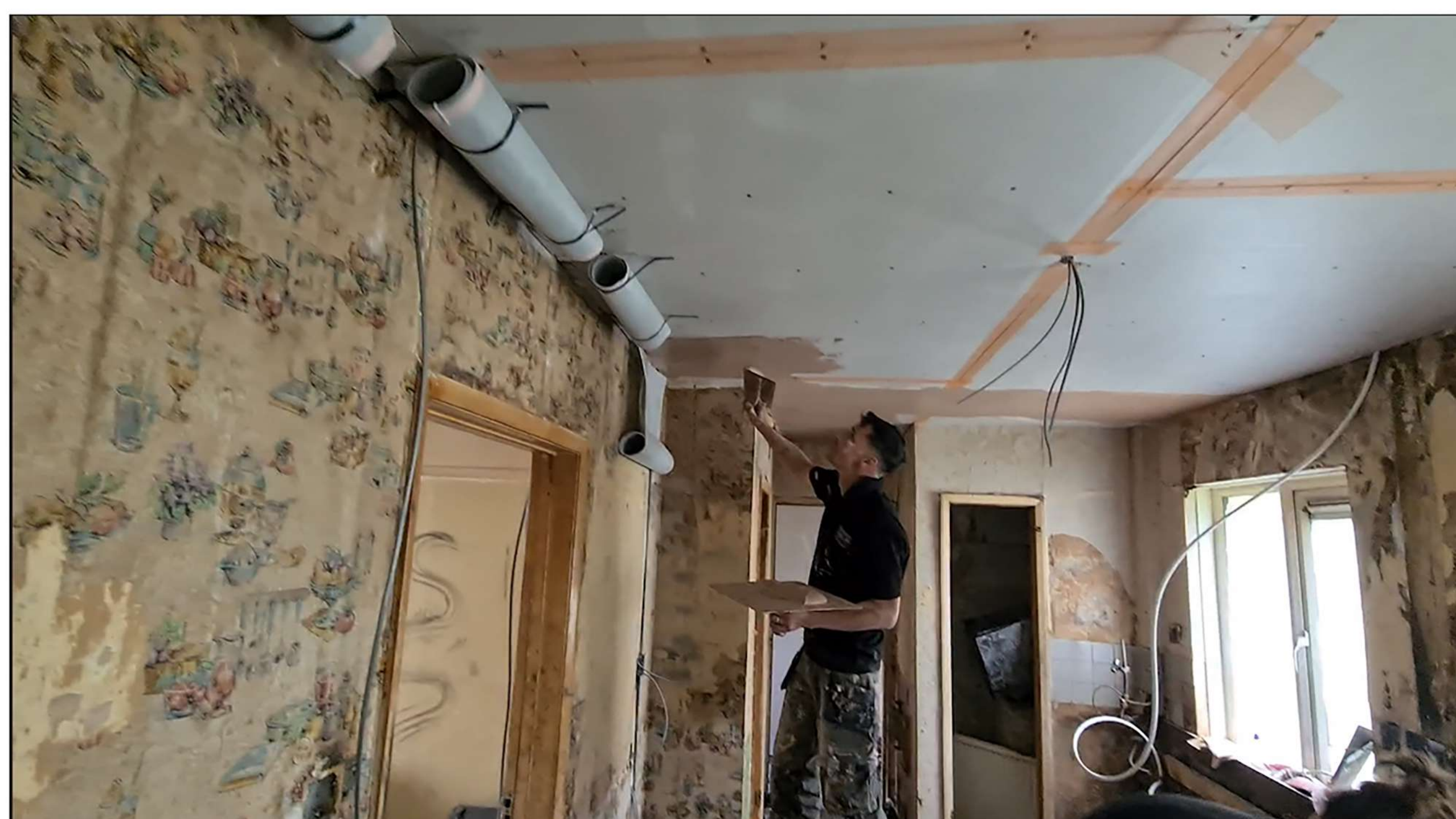
3 Bedroom Void property owned by Welsh HA. EWI/IWI throughout, double glazed with trickle vents 4kw PV array, 10kwh battery and inverter, HEATA hot water



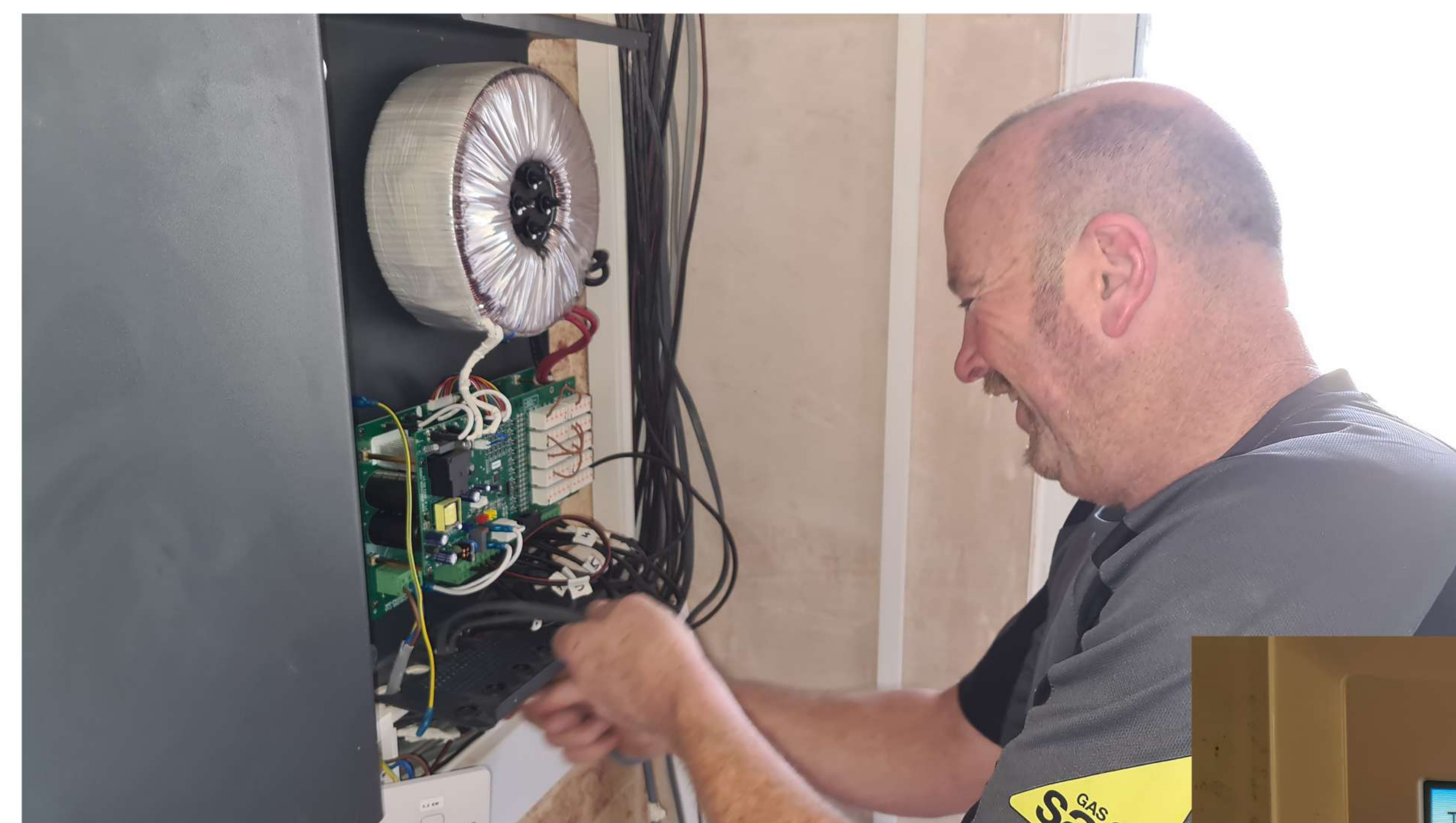
Mid terrace Void property



Location of heating mats showing port connections to PSU's



Plastering-in commenced, note location of mats hung by electrician on first fix



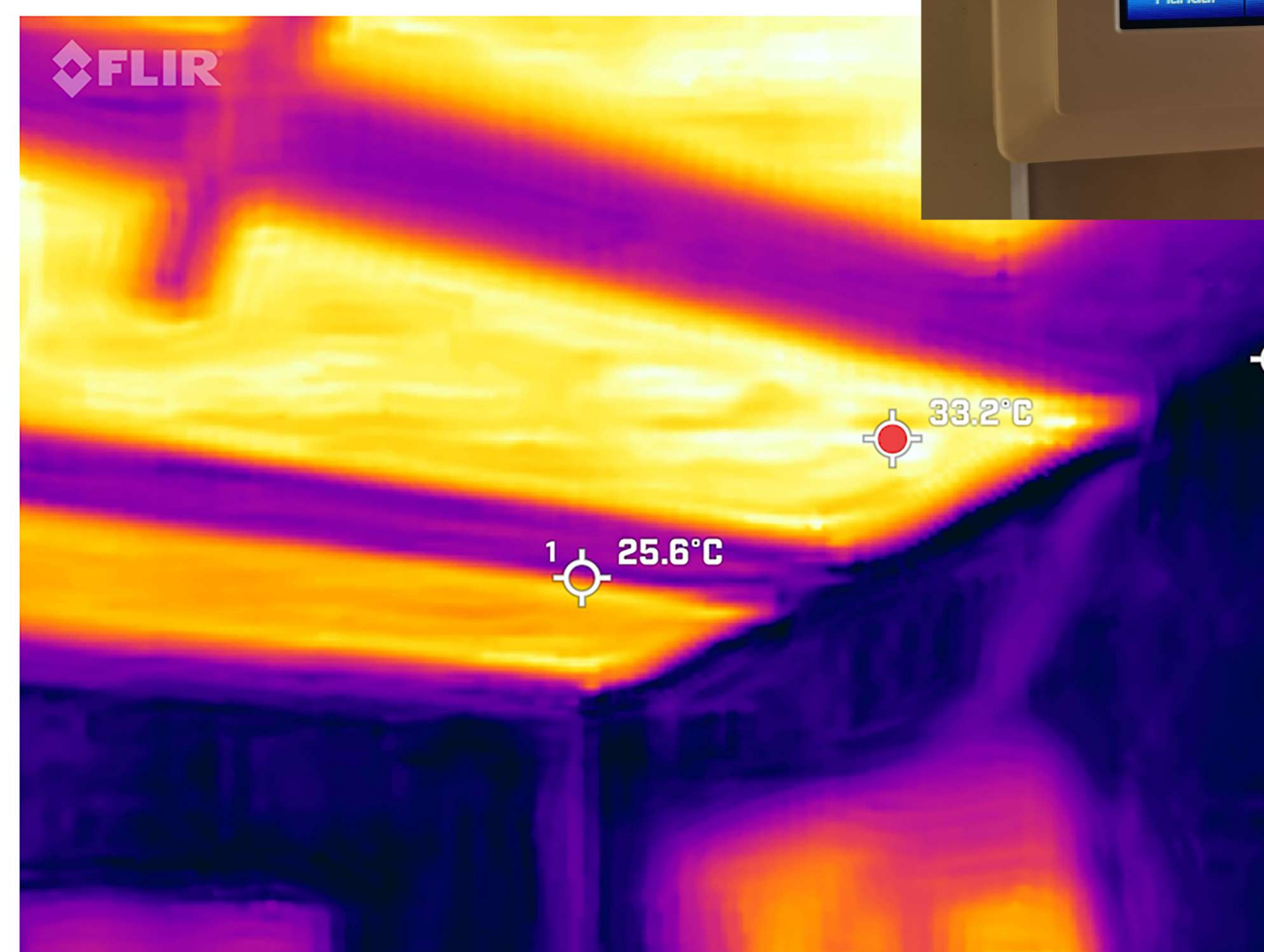
Wiring into the push fit connections in the Power supply unit (psu)



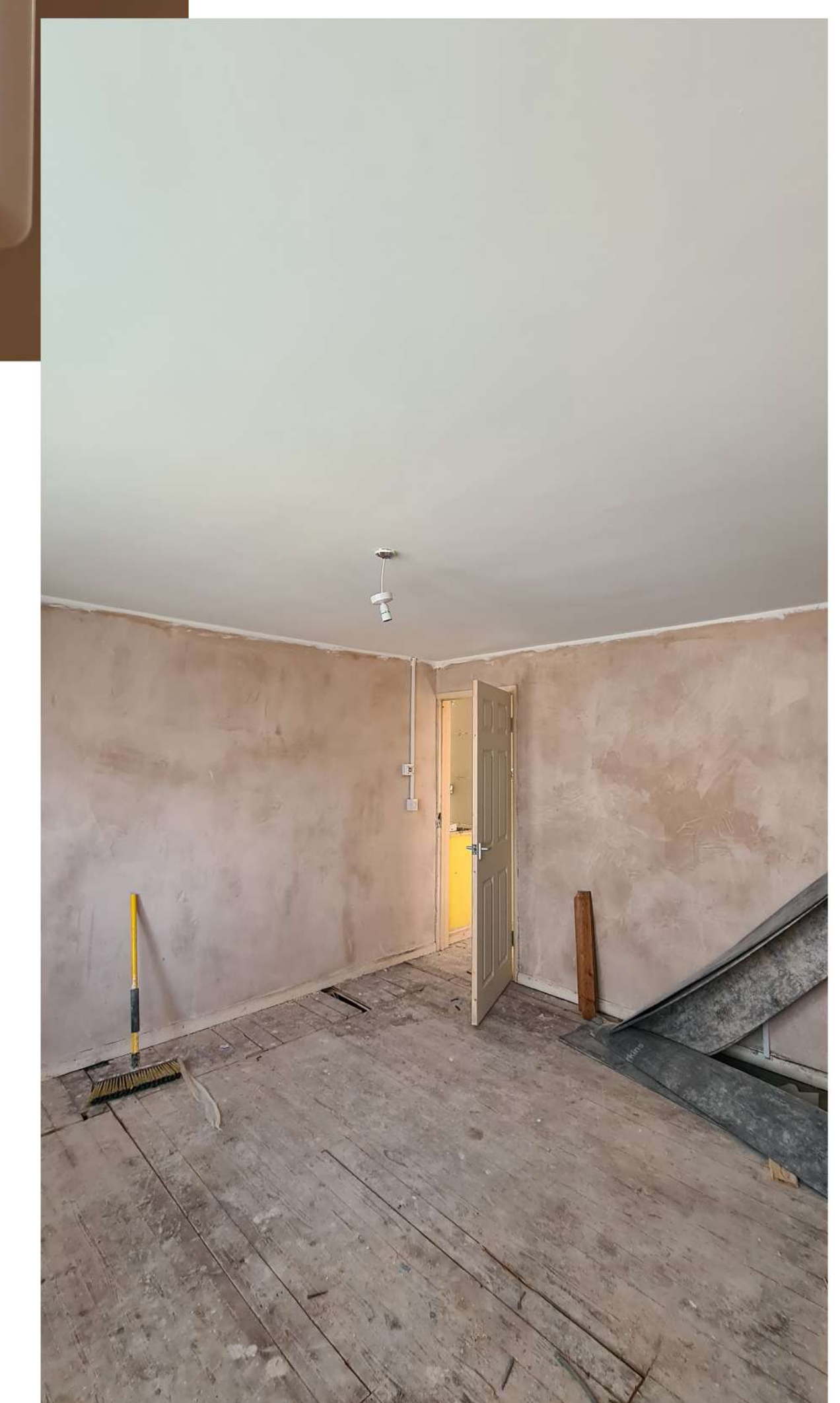
Stat installed into each room



Location of 2 x 36v PSU's running all zones



All switched on and operating with a max ceiling temp of just 36° raising the air to up to 28°



Ceilings easily plastered over and painted

e:energycarbon
energy efficient ceiling heating

